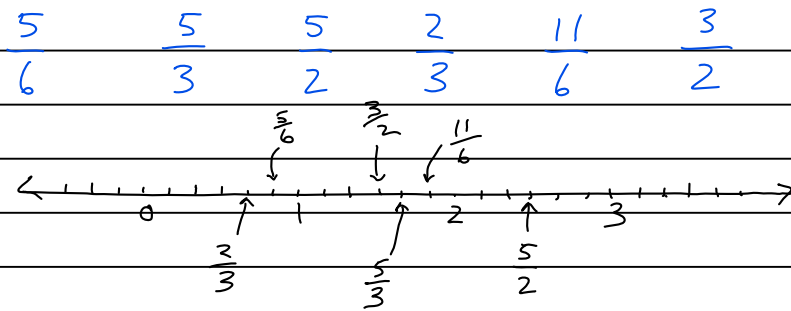


John Doe
Oct 11/2019
Block A

Math 8
Mr. Ursulak
Room 101

Lesson 2A 2: Adding and Subtracting Fractions

Warm-Up: Draw a number line showing the numbers from 0 to 3, divided into sixths. Then find the following numbers on the line:



Lesson:

Perform the following operations (a) numerically, (b) using fraction strips, and (c) on a number line.

a) $\frac{2}{3} + \frac{1}{12}$

b) $\frac{4}{3} - \frac{1}{6}$

$$\begin{aligned} & \frac{2}{3} + \frac{1}{12} \\ &= \frac{8}{12} + \frac{1}{12} \\ &= \frac{9}{12} \\ &= \boxed{\frac{3}{4}} \end{aligned}$$

$$\begin{aligned} & \frac{4}{3} - \frac{1}{6} \\ &= \frac{8}{6} - \frac{1}{6} \\ &= \frac{7}{6} \\ &= \boxed{1\frac{1}{6}} \end{aligned}$$